



INSTRUCTIONS

-J01903

2007-10-18

DYNA SEAT WITH ADJUSTABLE RIDER BACKREST

GENERAL

Kit Number

53042-01A

Models

For model fitment information, please see the P&A Retail Catalog or the Parts and Accessories section of www.harley-davidson.com (English only).

Additional Parts Required

For FXDWG: Separate purchase of Rear Seat Bracket (P/N 52152-97) is required.

NOTE

This instruction sheet references Service Manual information. A Service Manual for your model motorcycle is required for this installation and is available from a Harley-Davidson Dealer.

Kit Contents

See Figure 9 and Table 1.

INSTALLATION

Seat Installation

NOTE

When performing the following procedures, be careful not to scratch painted surfaces (fender, tank, etc.) with the metal tabs on the seat.

1. Remove the existing seat and passenger grab strap following the instructions in the appropriate Service Manual. Discard the grab strap and retain all other hardware for later use.
2. See Figure 9. Remove the seat bracket from the stock seat.
3. **For all except FXDWG:** Install the stock seat bracket onto the new seat with the stock screws. **For FXDWG:** Install new seat bracket 52152-97 onto the new seat with the stock screws. **For models equipped with original or accessory two-up seating:** Proceed to Step 6.
4. **On models equipped with an accessory Solo Seat:** Remove the plastic plug from the hole in the rear fender where the rear seat bracket will be attached.

5. See Figure 9. Slide the retention nut (9) onto the cable strap (11) so the wide end of the nut rests on the eye of the strap. Thread the cable strap up under the fender and through the fender hole. Pull up on the cable strap to hold the nut snug against the underside of the fender. Seat the rib of the retention nut in the notch in the fender hole and slide the retention washer (10) into place from the rear. This will lock the retention nut in place.
6. See Figure 1. Place the black bracket (1) from the kit onto the frame as shown.
7. See Figure 9. Install the new grab strap (8) in the original location with the hardware saved in Step 1. Tighten the nut to 10.85 N·m (96 in-lbs).
8. See Figure 1. Install the screw (2) in the hole on the forward edge of the bracket. Attach the locknut (3) and washer (4) from under the frame. Tighten to 10.85 N·m (96 in-lbs).

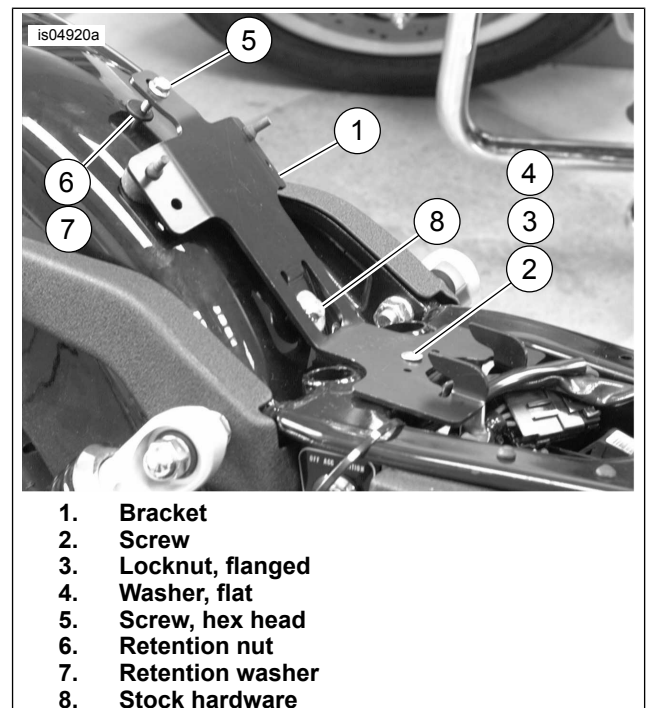


Figure 1. Bracket Installation

9. Insert the hex head screw (5) through the slot in the rear of the black bracket and into the new retention nut (6). Tighten to 10.85 N·m (96 in-lbs).
10. Install the seat (from front to back) into position through the grab strap. Make sure that the front mounting tab is hooked under the frame bracket, and the hooks from the black bracket have fully engaged the seat.

-J01903



Many Harley-Davidson® Parts & Accessories are made of plastics and metals which can be recycled. Please dispose of materials responsibly.

1 / 4

▲ WARNING

After installing seat, pull upward on seat to be sure it is locked in position. While riding, a loose seat can shift causing loss of control, which could result in death or serious injury. (00070b)

11. Attach the rear of the seat to the vehicle by installing the screw with external tooth lockwasher removed in Step 1. Install the screw through the seat mounting bracket into the rearmost retention nut in the top of the rear fender. Tighten the screw securely.

Backrest Installation

See Figure 2. Lift up the hook and loop flap on the top of the seat to install the backrest. Reach inside and push on the tab behind the backrest slot. Insert the backrest and press gently until it snaps into place.

▲ WARNING

After installing backrest, pull upward to be sure it is locked in position. While riding, a loose backrest can shift causing loss of control, which could result in death or serious injury. (00386a)

Backrest Removal

See Figure 2. Reach under the hook and loop flap and push on the tab behind the backrest. Gently pull up on the backrest and remove it from the slot. Close the hook and loop flap over the opening to protect the interior of the seat.

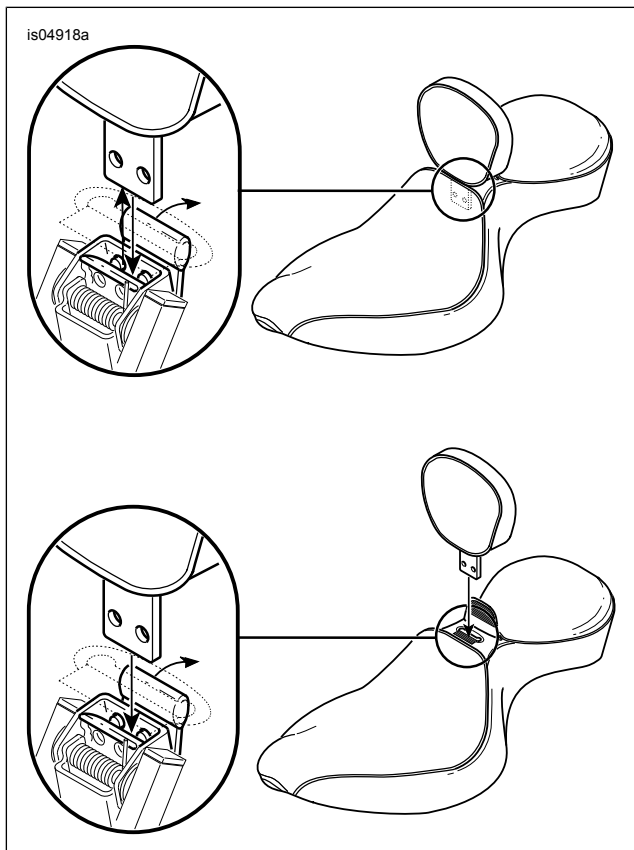


Figure 2. Backrest Installation and Removal

OPERATION

▲ WARNING

After installing backrest, pull upward to be sure it is locked in position. While riding, a loose backrest can shift causing loss of control, which could result in death or serious injury. (00386a)

1. See Figure 3. The adjustment handle is used to move the backrest pad into the forward and rearward positions.
2. See Figure 4 and Figure 5. To adjust the backrest pad forward or rearward, pull the handle. Leaning back against the backrest pad will help adjust it rearward. Keeping your weight off of the backrest pad while pulling on the handle will cause the backrest to come to its full forward position. Releasing the handle will lock the backrest into place.
3. See Figure 6 and Figure 7. To adjust the backrest pad up and down, squeeze backrest pad in approximate location shown. Move the backrest up or down into the desired position while squeezing pad, then release when the pad is in the desired position.
4. See Figure 8. The backrest pad may be pushed forward against seat as shown to ease in getting off and on the motorcycle without activating the release handle.

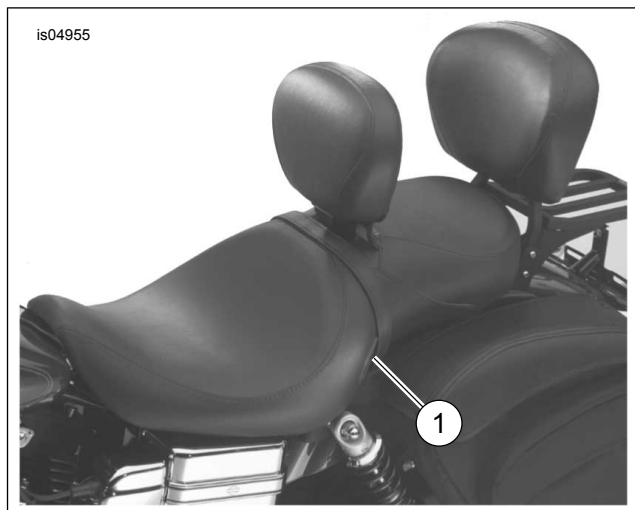


Figure 3. Handle Location



Figure 4. Backrest in Forward Position



Figure 5. Backrest in Full Rearward Position

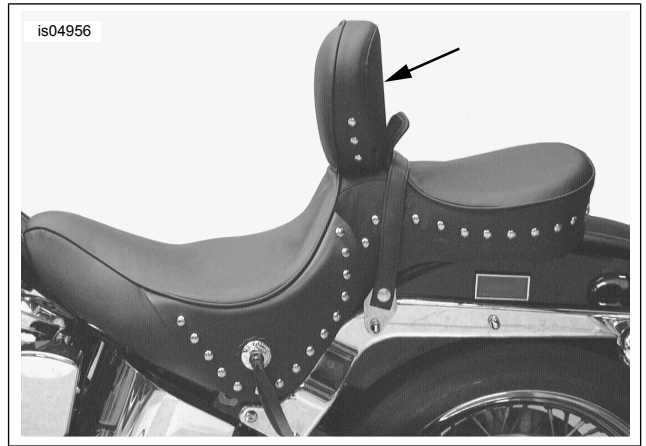


Figure 7. Backrest in Fully Down Position

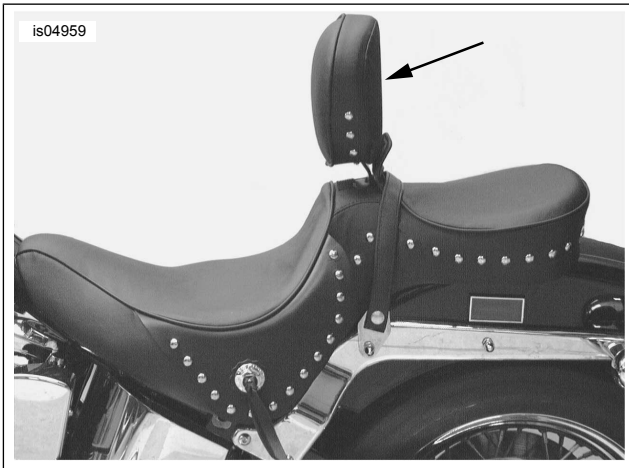


Figure 6. Backrest in Upward Position

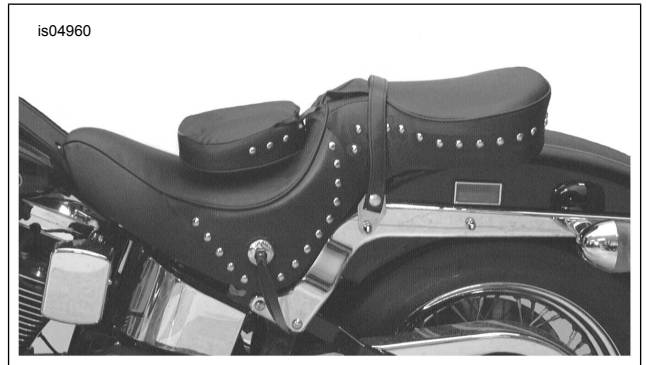


Figure 8. Backrest Pushed Fully Forward

SERVICE PARTS

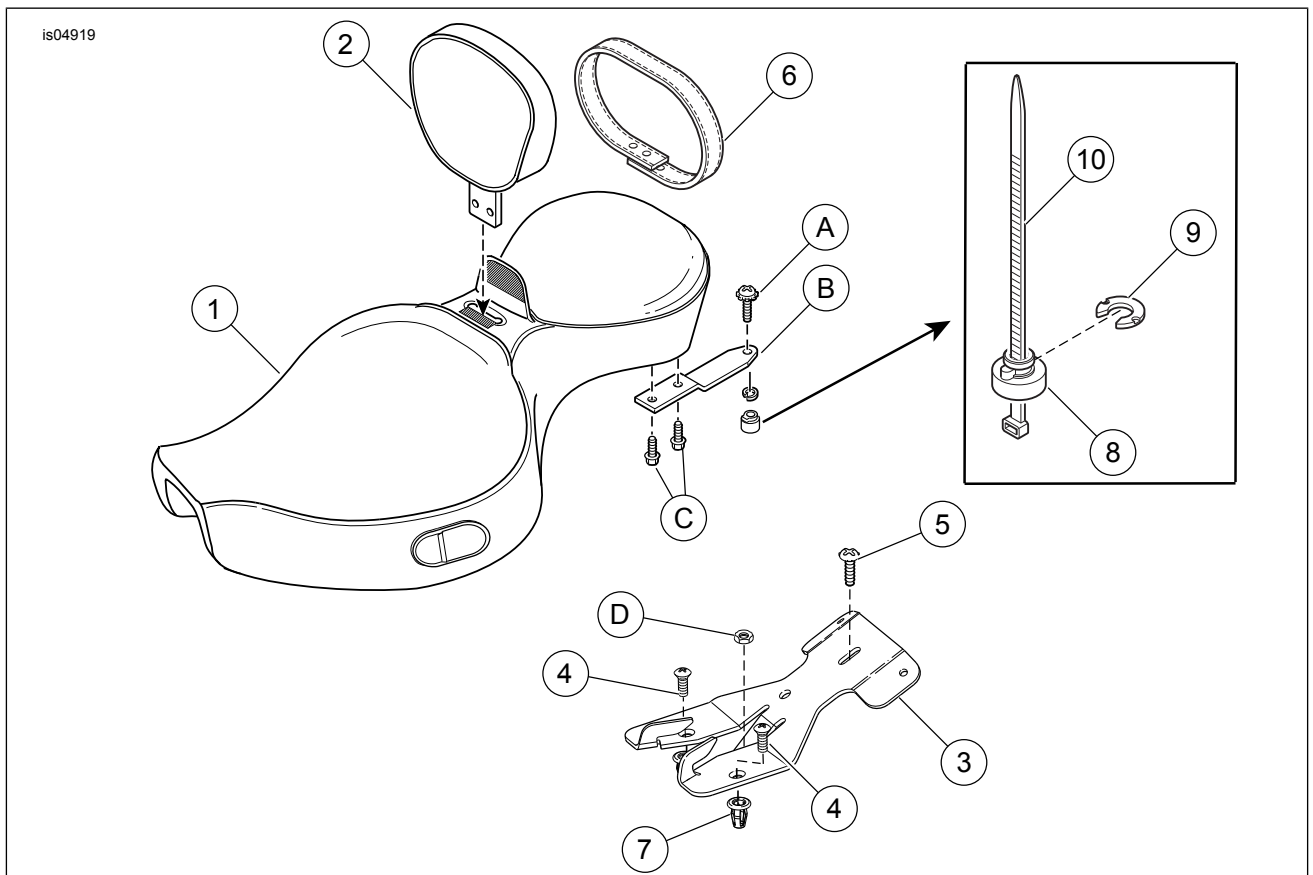


Figure 9. Service Parts: Seat with Adjustable Rider Backrest (generic style shown)

Table 1. Service Parts Table

Item	Description (Quantity)	Part Number
1	Seat	Not Sold Separately
2	Backrest	53044-01
3	Bracket (for all models except FXDWG)	52227-01
	Bracket (for FXDWG)	52152-97
4	Screw, flat head 1/4-20 x 1.0 in.	1617
5	Locknut, flanged 1/4-20	8021
6	Washer, flat	6232
7	Screw, hex head 1/4-20 x 1.0 in.	3922
8	Grab strap	51173-93
9	Retention nut	See Service Kits
10	Retention washer	See Service Kits
11	Cable strap (used as an installation aid)	10039
12	Release handle	See Service Kits
13	Screw, button head (2)	See Service Kits
Items mentioned in text, but not included in kit:		
A	Stock seat rear mounting screw	
B	Stock seat bracket	
C	Stock screw (2)	
Service Kits		
	Release handle	52553-03
	Release handle with cable	52414-98A
	Seat retention hardware	59768-97