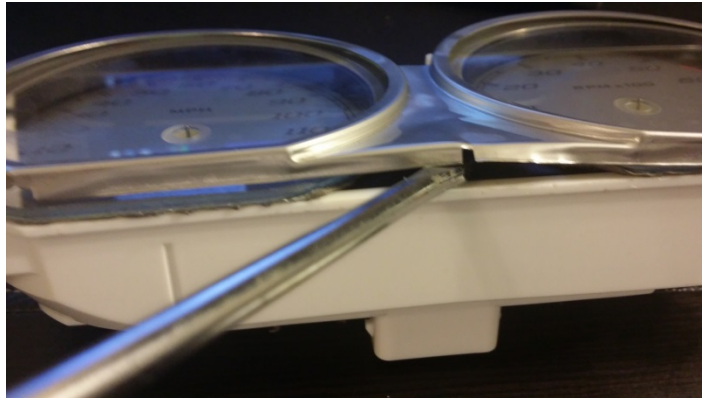




Faceplate Installation Instructions

Harley Davidson Touring Models – 2014 and up

1. Remove the gauges from the bike using the steps outlined in your repair manual.
2. Beginning with the speedometer and tachometer assembly. Use a screwdriver or other flat tool to gently pry up the lower center edge of the metal trim piece as shown below.



3. Push up towards the top as far as you can, being careful not to hit the glass. Once you have loosened the double sided tape that holds this down you can pull up on the edges all the way around the gauges and the entire piece will lift off. Be patient, this can take a little bit of time.

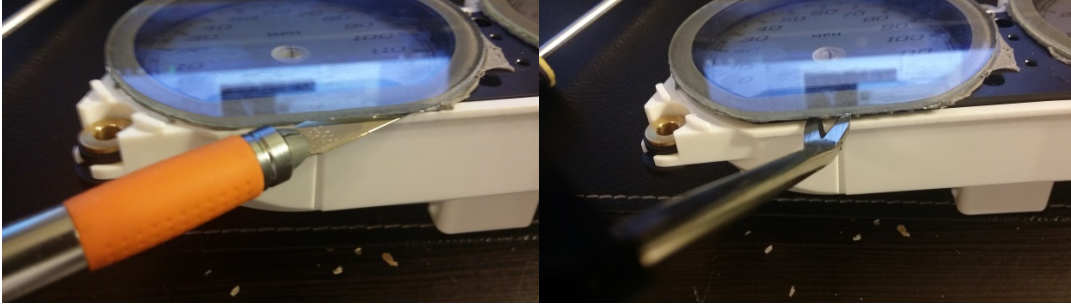


4. Now that you have access to the glass covers, begin by removing the 3 star screws indicated by red arrows below using a T9 star bit.

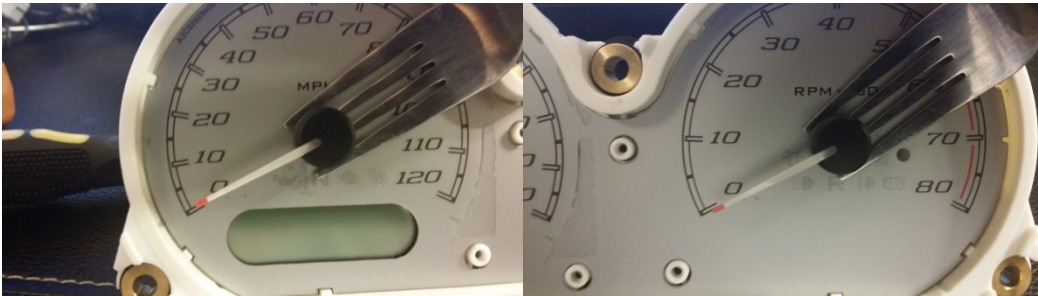




5. TAKE YOUR TIME ON THIS STEP!!! Using an Exacto knife or other sharp thin knife, work your way around the edges of both glass covers, separating the double sided tape from the lower gauge housing. Once you have gone around both gauges you should be able to use a thin wide flathead screwdriver to gently pry up on the glass. BE VERY CAREFUL doing this as the glass can crack. Once you have a portion lifted up you can use your finger to get under it and lift it the rest of the way. DO NOT force it. If it feels like it is still stuck down, it probably is. Look for areas where the adhesive may not have been loosened enough and work with them again. Set the glass aside in a secure location so it is not damaged.

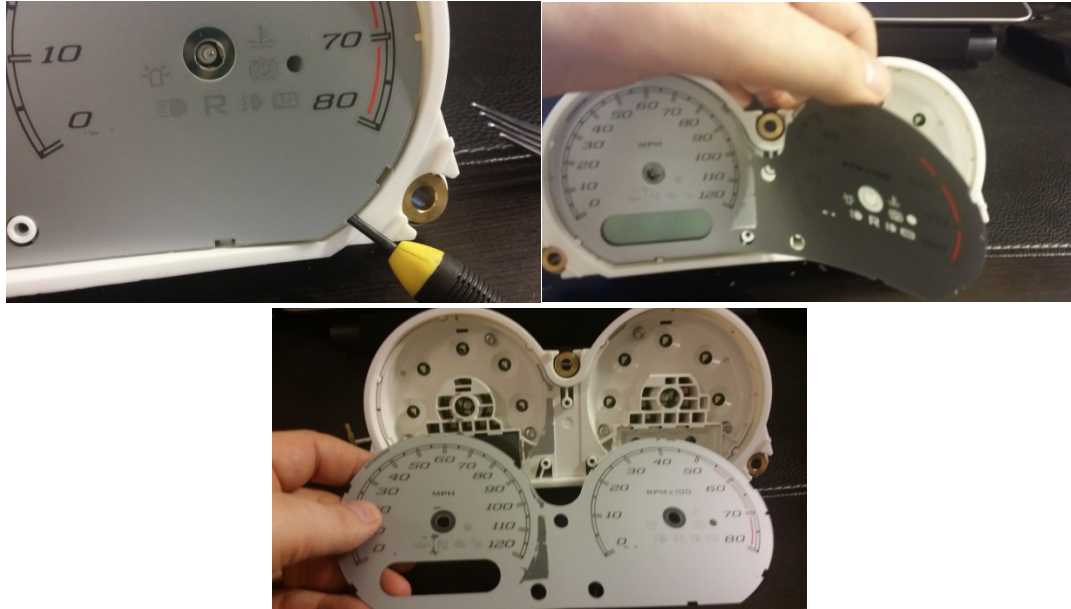


6. With the glass removed, use a kitchen fork or other dual pronged tool to get under the gauge needles and gently pry them up. This does not require a lot of force. They will pop slightly when released so be careful not to lose them.

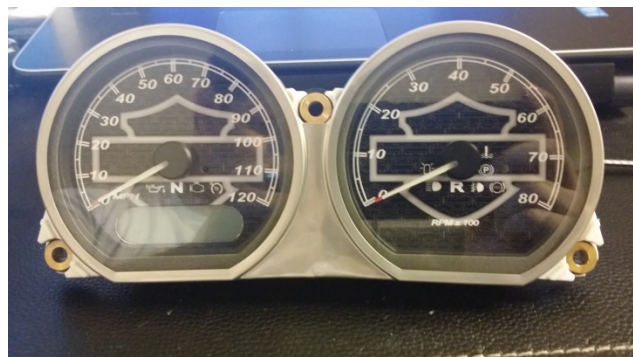




- Using a small screwdriver or other flat tool get underneath an edge of the stock gauge face and gently lift it up. It is stuck down with an adhesive so once an edge is pulled up use your hand to pull the remaining areas up. If you plan to re-install the factory face in the future do not go to fast or you will damage the factory face, making it unusable.

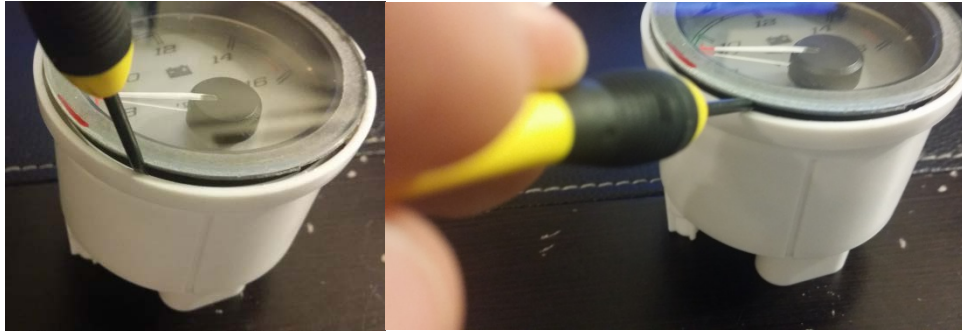


- Place the new gauge face onto the plastic gauge base, lining all of the holes and notches up to the factory locations. A small amount of non-superglue adhesive may be needed to secure the custom gauge face. Use it sparingly and in areas that do not interfere with gauge operation.
- Once you have installed the new gauge face, take the gauge assembly to the bike, with the needles, and plug the gauge back into the bike. Power the bike on and allow a few seconds for the needle motors to zero out. Once they have zeroed, place the needles back on the gauge assembly pointing directly at zero. Turn the bike off and back on to verify that the needles still rest at zero. Once you have verified that, unplug the gauges and return to the work surface.
- With the needles reinstalled, place the glass back over the speedo assembly, lining up the plastic base of the glass with the speedometer housing. Once it is properly in place, press firmly to secure the adhesive tape to the lower housing.
- Replace the metal trim onto the gauge assembly. It may be necessary to bend the metal trim back into shape if it was distorted during removal. Do so gently so further distortion is not caused. Once it is back in place set this gauge assembly aside.





12. TAKE YOUR TIME ON THIS STEP!! For the small gauges, use a small screwdriver or other flat tool and place it between the edge of the plastic housing and the glass. VERY GENTLY pry up. Do this slowly and with even pressure. Work your way around the gauge to loosen the adhesive tape. It may be necessary to use an Exacto knife to cut back some of the adhesive tape.



13. Once the glass is removed use the same method outlined above to remove the needle.
14. Once the needle is removed, use the same method outlined above to remove the stock gauge face. *TIP!! – you may need to take the gauge to the bike and power it on to mark the proper location of the needle. Use a sharpie to mark the inside edge of the white housing where the needle points to with the bike powered on. This will ensure proper re-installation of the needle.*
15. Install the new custom gauge face, taking care to place the proper gauge face on the small gauges (volt or fuel).
16. Follow the procedure outlined above to reset the needle. This may be slightly different as you may need to install the needle in the proper position to account for fuel level or system voltage. Use the markings created in step 14 to place the needles back where they go with the bike powered on.
17. With the custom gauge face and the needles installed, replace the glass, lining up the two lock tabs with the holes in the housing. Press firmly to secure the adhesive to the base.



18. Re-install the gauges into the bike and enjoy!

Thank you for your purchase. If you have questions about this installation please feel free to email me at jared@speedgaugecustoms.com. If you do accidentally break one of the glass pieces do not worry. You can contact a local glass shop and get a piece cut. Take your factory glass to them and they can cut you a new one. You can obtain 3M double sided adhesive tape from any auto parts store and cut it in sections around the glass to secure everything in place. If you are unable to locate a glass piece, please contact me at the above email address. I keep several in stock just in case.